

**AgroParisTech
Nancy Campus**

Welcome guide



MASTER AETPF

AgroParisTech 
Talents for a sustainable planet



2022/23

TABLE OF CONTENTS



[Apply and pre-register online](#) p.3

- Application online and selection committee p.4
- Pre-register online p.5



[Administrative registration](#) p.6

- 6 most important steps p.7
- Registration at AgroParisTech – documents p.7
- Student card, tuition fees, scholarship Campus France p.8
- Second registration form and civil liability insurance p.9
- Opening a bank account p.9-10
- Validation of residence permit/visa p.10-11
- CVEC certificate p.12
- Registrate to National healthcare system p.12-13
- Help contact: International Student Office p.14



[Educational information](#) p.15

- Beginning of the school year : meeting, first courses, teachers p.16
- Time Table, teaching places, choice of teaching units p.17
- Your contact at AgroParisTech tuition service: DEP p.18



[AgroParisTech Resources](#) p.19

- IT resources : wifi, email account, synapses, online courses p.20
- Campus life : access badge, computer room, library p.21



[Useful information](#) p.22

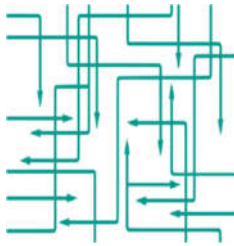
- Where to eat p.23
- How to travel p.24
- Teaching places indications p.25
- Student associations p.26
- Practice a sport, discover Nancy, have fun p.27



[Healthcare](#) p.28

- Consult and declare a doctor p.29
- How to find a doctor p.29-30
- Emergency numbers p.31
- Student help: AgroParistech Watchgroup p.32

Apply and Pre-Register online





Apply online: FROM 15 FEBRUARY TO 2 JUNY 2022 :

Application website: <https://tinyurl.com/masterAETPF>

Specific for M2 FEN students: <https://tinyurl.com/masterFEN>

1/ On top right of the screen, click on:

JE CANDIDATE

2/ Fill in the required information online, sign the **application form and upload it as well as your **CV and your cover letter mentioning your choice of path**. These documents are essential for the selection committee.**

3/ Send all your documents (included application form signed and recommendation letters), precisng your full name as well as your Master year and path, by GoogleDrive, Wetransfer (or any cloud) at :

masteraetpf-nancy@agroparitech.fr

4/ Your application file must be complete on Juny, 2nd to be studied by selection committee

N.B: Your application for the Master will be officially validated upon numerical receipt of the duly signed application form, accompanied by the required documents.

We will inform you whether your sending is received and if it's complete or not.

If it is incomplete, you should send us by email the missing documents as soon as possible.

Selection Committee:

A selection committee of teachers from the University of Lorraine (UL) and the AgroParisTech campus of Nancy (APT) will meet in the second half of June.

It will select the students admitted in the first and second years of the AETPF Master. The result will be sent to you in the following days using the email address indicated on your online application form.

If you're selected, you will have to confirm as soon as possible whether you wish to register for the master degree or not.





Pre-register online: FROM 13 JULY TO 29 AUGUST 2022:

- After confirming your wish to register, from July 13, **you will receive an e-mail** asking you to finalize your pre-registration on an online platform called Synapses.
- You will have to **log in and finalize your pre-registration before August, 29 by filling and sending all the required information.**
- You will finalize your registration at AgroParisTech with [DEP](#) service in September.
- Find below the required documents to upload on Synapses: <http://www2.agroparistech.fr/Modalites-d-inscription.html>.

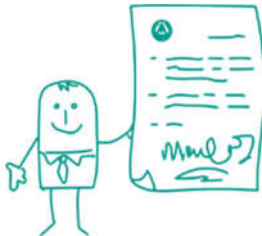


If you encounter difficulties in completing your online registration, please contact Laetitia Thiriet.

Refer to page 18 to contact [DEP](#) service in charge of students.

*Master in Agro sciences, Environment, Territory, landscapes and Forests is a joint accredited teaching program between AgroParisTech and University of Lorraine that benefits from joint pedagogical and material resources.
However, you will get your diploma from AgroParisTech in accordance to your administrative registration.*

ADMINISTRATIVE REGISTRATION





FOLLOW THESE 6 IMPORTANT STEPS:

***Don't lose time to proceed at your arrival in France, because some procedures can take quite long to achieve.**

1. Finalize your administrative registration at AgroParisTech ([DEP](#))
2. Pay your tuition fees
3. Pay [CVEC](#)
4. [Open a bank account](#)*
5. [Have your residence permit/VISA validated](#)*
6. [Register at Social Security \(national healthcare system\)](#)*



Administrative registration at AgroParisTech : First weeks of September

Registration are done by AgroParisTech [DEP](#) service (contact page 18).

International students will get a meeting with DEP in the 1st days of the schoolyear.

The details will be specified to you at the end of August by email.

Find below the list of the documents required to finalize your registration:

- 1 ID photo
- Proof of payment for tuition fees (not required for Erasmus Mundus)
- certificate with QR CODE of [CVEC](#)
- 1 IBAN - Bank information
(can be given later when your bank account is open)
- [Copy of your civil liability certificate](#)
(scholar and non-scholar cover is compulsory)
- [Secondary registration form for University of Lorraine](#) (to fill in while you come)



Documents to upload here to be signed:

(English) <http://www2.agroparistech.fr/1-1-Master-2-FEN-Practical-information-for-your-administrative-registration.html>

- [Aknowledgment of academic rules – to sign : Download here](#)
- [Individual commitment - to sign : Download here](#)
- [Authorisation for image rights - to sign : Download here](#)



Finalize your administrative registration: Student Card

Once you have accomplished every step to register, you'll be given a certificate of attendance at school and a student card from AgroParisTech as well as an AgroParisTech computer account.

The certificate of attendance will allow you to [open a bank account](#) or obtain your residence permit/VISA.

AgroParisTech student card will allow you to benefit from discounts at various stores and also to obtain an AgroParisTech access badge (see page 12).

You will receive an email when your physical student card is available at the DEP (end of September/beginning of October), and a digital version will need to be activated on your smartphone.



Once your computer account is available, [DEP](#) service will send you an email (late September/early October).

Please refer to page 20 for more information on computer account.



Tuition fees:

For the 2022/2023 year, registration fees were €243.
ERASMUS MUNDUS students are exempt from paying these fees.

▪ **SCHOLARSHIPS: AgroParisTech does NOT offer any scholarship.**
Be sure to seek funding in your home country or by any other means.

For more information about possible financial support, you can refer to Campus France website: <https://www.campusfrance.org/fr/bourses-etudiants-etrangers>



French governments scholarship by Campus France:

If you are eligible for this scholarship, your referent in France will be Mrs Marie-Christine MARCHAL.

As soon as you arrive in Nancy, you must provide her with your scholarship certificate and proof of approval from Campus France.

Please give a copy of these documents to [DEP](#) service.

When you have paid your registration fees to AgroParisTech, you will receive a payment certificate. You will have to give this certificate to Campus France to be reimbursed by transfer to your bank account



Secondary registration form for University of Lorraine:

The AETPF Master is co-accredited between AgroParisTech and the University of Lorraine.

Registration information as well as CVEC document with QR code and an ID photo will be sent from DEP AgroParisTech to tuition service in University of Lorraine.

This second registration will allow you to make your choice of teaching units with the University (see page 9) and also to issue you a student card from the University of Lorraine.



This card will give you access to your online timetable, the university halls, the library, and the university restaurants.

It will be available end of September/beginning of October at the Faculty of Science and Technologies's tuition service located on the ground floor of the building. You will receive an email telling you the day and the hour to pick it up.



Civil liability certificate:

It is compulsory to take out civil liability insurance to cover damage that you may cause to other persons or their property. This insurance is required for any registration in a higher education institution in order to cover you during your schooling including internship.

3 organizations called [LMDE](#) or [MGEL](#) or [HEYME](#) offer a civil liability insurance specially designed for students: unlike other insurance policies, it covers activities specific to student life including: studies, internships, sports and student job and they can also provide health insurance cover.



Opening a bank account in France:

Why opening a French Bank account?

If you live in France for more than 3 months, opening a French bank account is essential.

An international debit / credit card will not be enough for your daily life.

As a student, your French bank account will be used not only for your daily expenses but also for administrative procedures (payment of [CVEC](#), reimbursement of medical expenses, housing assistance, transaction of expenses between you and the school, etc.)

How to open a bank account ?

Chose a bank and bring the following documents:



- Passeport or ID card (if you're European)
- School certificate from an higher education institution
- Proof of residency in France

Inquire beforehand to know the different bank offers which may differ.

Most banks have "student packs" which include many benefits. Once all the formalities have been completed, you will receive your credit card. The card is both a debit and credit card.

You will use it to pay, but also to withdraw cash from any ATMs available 24/7.

You can also subscribe to an online bank (which can be easier).



1. Depending on your contract, you may have fees if you withdraw money from an ATM that does not belong to your bank. Remember to check this when creating your account.

2. Note that some small businesses do not accept credit cards or checks below 10 or 15 euros. Remember to carry a small amount of cash with you to pay



Validation of your residence permit (for nationals outside the European Union)

In the 3 months following your arrival in France, you must validate your VLS-TS, a long-term Visa which is equivalent to a residence permit.

Persons with a long-term visa, authorizing them to reside in France for more than 3 months, marked "STUDENT" and "CESAD R311-36" do not have to apply for a temporary residence permit for their first year in France. **If you wish to reside longer than the date authorized on your VLS TS Visa, you will need to apply for a residence permit at the Prefecture at least 2 months before the expiration date.**

To validate your VISA, follow this link:

<https://france-visas.gouv.fr/en/web/france-visas/your-arrival-in-france>

There is new dedicated hotline for visa information : **0806 001 620**

These are the information and documents required to validate your residence permit:

- All information on your VISA
- Date of arrival on French Territory
- Residency address in France
- Your credit card number to pay online the cost of the tax stamp of about 50 euros.



If you do not yet have a credit card during your visa validation, you can buy the electronic tax stamp in tobacco stores which have this logo on their front door.



Then you will need to validate your visa registration and you will receive a validation certificate in pdf format.



Remember to save this document. Keep it preciously in digital format as well as on paper.

You will need it throughout your stay in France (it replaces the OFII stamp on your passport).

NOTE: OFII can summon you for additional procedures such as a medical examination or the signing of a republican integration contract.

Please note that Algerian students must follow a different procedure. Refer to official site: <https://tinyurl.com/w73spqI>



If you need help for this procedure, contact the [International student office of University of Lorraine](#) (see page 14)



Payment of CVEC : contribution to student life and the life of the campus

CVEC cost is about €95.

Payment is made online. Depending on your situation, you may be exempt. ERASMUS MUNDUS students must pay CVEC.

This contribution is not paid directly to AgroParisTech but paid to the CROUS. CVEC payment is compulsory for any registration in a higher education establishment. If you are registered in 2 establishments, you only have to pay it once.

Follow this link to create your account:

<https://www.messervices.etudiant.gouv.fr>



To pay CVEC online (by card): <https://cvec.etudiant.gouv.fr/>

To pay by cash: You must go to the Banque Postale.

This will cost you an additional fee of €5.

You will receive a payment certificate. Then, within 48 hours you will receive by email a link to download your CVEC certificate



National healthcare system: 2 steps to make

In France, the public healthcare system is called Social Security. Social Security is the basic cover for all care.

Medical costs are not fully covered and can quickly turn out to be high (dentist, specialist, hospitalization, etc.).

That is why it is highly recommended to take a complementary health insurance (private).

1. Affiliation to Social Security:

- Social security affiliation is compulsory and free of charge. Follow this link to proceed:
<https://etudiant-etranger.ameli.fr/#/>
- This will allow you to benefit from basic reimbursements for your health care (medical consultations, hospital costs or prescription of medicines).
- Be sure to provide all the information and documents required, this link reminds you of the procedure to follow (in French):
<https://tinyurl.com/AmeliProcedure>
- Once it's done, you will receive a temporary social security number.
- Download your temporary attestation ("attestation de droits temporaire").

- Your attestation of rights will be required for each medical act as long as you don't own a social security card called 'carte vitale'.
- Treatment sheets (yellow sheets) will be given to you until you own a social security card. You'll have to send them to CPAM of Nancy to be reimbursed (see page 27)
- Once your registration is complete, you'll receive a permanent attestation of rights ("attestation de droits permanents") for social security.
- Your permanent social security number will allow you to create an 'Ameli account' and have access to a numerical space to oversee your reimbursements, download certificates or find online helper. You'll have to give the documents required to obtain your social security card (carte vitale).
Reference website: <https://tinyurl.com/AmeliStudentsProcedure>



> If you are unable to finalize your online registration or encounter any problem, call 3646 (€0.06 / min +cost of your call) – (English speaker available)

➤ **MGEL staff can help you register with social security.**

2. Subscribe to a complementary health insurance:

The best known complementary health insurances for students are MGEL and LMDE and HEYME.

Please note that MGEL offers a package including mutual health insurance and civil liability insurance (for daily life and residence).

For more information on HEYME offers : <https://heyme.care/en/foreign-student>
Online contact

For more information on MGEL offers: <https://www.mgel.fr>
3 Rue des Carmes, 54000 Nancy
Phone: 03 83 30 03 00

For more information on LMDE offers: <https://www.lmde.fr>
9 Rue Maurice Barres, 54000 Nancy
Phone: 0 811 505 633 (€0,06 /min + call price)

For more information, see section [Healthcare](#)



International student office at university of Lorraine:



à Nancy

Université de Lorraine – DRIE

Accueil International

91, avenue de la Libération

F-54001 Nancy Cedex

Du lun. au ven. : 9h-12h / 13h15-16h00

+33 (0) 3 72 74 05 04

[The international student office](#) is there to help you with all your administrative procedures during your stay in France.

In connection with the prefecture, it guides you for all visa and residence permit applications.

The Department of International and European Relations is at your service to provide you with all the useful information concerning student life in Lorraine (leisure, work, culture).

<https://welcome.univ-lorraine.fr/fr/contact/>

How to go there from AgroParisTech:

By bus: Take line C2 Dom Calmet stop (direction: Laxou- Champ le Bœuf). Leave at Cavallier.stop.

Dom Calmet stop is located in St Dizier street, 10 minutes walk from AgroParisTech

By foot: 30 minutes from AgroParisTech or 10 min walk from Train station.

Educational Information





Beginning of the school year:

- **First meeting:**

The details of the course of the year will be given to you by the managers of the master during this meeting.

Your presence is essential.

The date and place will be confirmed to you by email before the start of the school year as well as the details concerning the first course.

- **First courses:**

- **1st year of Master (M1)**

Date: Thursday 1st september 2022 at 8:30

Place: Faculty of Sciences (University of Lorraine) in Vandoeuvre les Nancy

- **2nd year of Master (M2)**

Date: Thursday 1st september 2022 at 10:30

Place: Faculty of Sciences (University of Lorraine) in Vandoeuvre les Nancy



- **Referent teachers of master's paths are:**

Name	Master's paths
Bruno FERRY	IPE, ECOSAFE, as well as pedagogic referent for AETPF master
Paulina PINTO	FEN
Holger WERNSDORFER	BFD
Marie-Reine FLEISCH	GCRE

You can contact this email, mentioning your path and degree:



masteraetpf-nancy@agroparistech.fr

▪ **Timetable:**

Your timetable will be available on the ENT of the University of Lorraine once your registration is complete (Late September / early October).



Until then, you will receive your timetable by email.

▪ **Teaching places:**

➤ **1st year of Master (M1):**



The courses will take place mainly at the Faculty of Sciences in Vandoeuvre-les-Nancy (University of Lorraine). Some courses will take place in the AgroParisTech Nancy campus.

➤ **2nd year of Master (M2):**

The courses will take place on [several sites](#) according to educational needs:

- AgroParisTech Nancy campus.
 - Faculty of Sciences in Vandoeuvre les Nancy
 - ENSAIA in Vandoeuvre les Nancy
 - INRAE in Champenoux
- (See page 24 for indications)



▪ **Choice of teaching units (UE):**

Teaching units are called « unités d'enseignements » or « UE ». Your choices will be registered by a person at the Faculty of Sciences.

The choices are made for each semester whether you are in master 1 (M1) or master 2 (M2).

The managers of M1 and M2 will give you a document to fill in to define your choices.

The person to contact concerning your choice of teaching units is:



Laetitia HARY at Faculty of Sciences
Entry E1B- 7th floor
Boulevard des aiguillettes
54500 Vandoeuvre les Nancy
Master-aetpf-contact@univ-lorraine.fr



**Your tuition service at AgroParisTech:
Direction of studies and pedagogy (DEP):**



As soon as you arrive and throughout your studies at AgroParisTech, the staff of the Studies and Pedagogy Department (DEP service) will be your privileged contacts:

DEP

**14 rue Girardet in Nancy
1st floor of Nanquette building
phone: 03 83 39 68 00**



depnancy@agroparistech.fr

Name	Function
Christophe VOREUX	Director of studies and pedagogy English speaker
Laetitia THIRIET	AETPF Master Secretary Registrations, internships, diplomas, English speaker
Michèle BESANÇON	Studies and pedagogy secretary Scholarships, leave of absence



DEP service will be your contact for:

- Registration
- Certificate of attendance
- Transcript of records
- Internship agreement
- Certificate of achievement
- Diploma

To write to DEP service, the postal address is:

AgroParisTech centre de Nancy - DEP
14 rue Girardet
CS 14216
54042 NANCY cedex

AgroParisTech Resources





IT resources:

As an AgroParisTech student, you benefit a computer account (username and a password) as well as a zimbra email address of this type: `firstname.lastname@agroparistech.fr`.

This account will give you access to AgroParisTech computers as well as to your virtual teaching space via: <https://intra.agroparistech.fr//moncompte>



- **WIFI (Eduroam):**

To access the wifi network, Eduroam, within the school, log in with your AgroParisTech or University of Lorraine credentials.

- **Email account:**

As an AETPF master student you will have 2 credentials and email accounts: 1 AgroParisTech + 1 University of Lorraine.

Zimbra access: <https://webmail.agroparistech.fr>



All information relating to your scolarity will be sent to these formal addresses. Remember to redirect your emails to your personal mailbox so as not to miss anything!
And do not change your password.

- **SYNAPSES:** <https://synapses.agroparistech.fr/>

SYNAPSES is AgroParisTech's management software of studies and pedagogy. You can register, check your grades and register your internship agreement.

- **Online course platform:**

<https://ecampus.paris-saclay.fr/>

You'll get information in due time.

Practical information for campus life:



▪ Access pass:

The access badge will allow you to access the AgroParisTech Nancy campus.

This badge will be given to you by the person in charge of the St Georges residence when you hand over the keys to your student accommodation at the residence.

If you do not live at the residence, please contact reception desk of AgroParisTech Nancy.

This badge is free but must be returned at the end of your studies. If you do not return it, an amount of €15 will be charged.



▪ Free access computer room:

Room F is a computer room available 24 hours a day for all students on campus.

You can have access to it by using your badge.



▪ AgroParisTech Library:

The manager of the library will meet you at the start of the school year to explain how it works and show you how to use the resources on the dedicated website:

<https://tinyurl.com/docpatrimoine>



As a student of the AETPF Master, you will also have access to the [library of the Faculty of Sciences and Technology.](#)

Useful Information





Where to eat:

PLEASE NOTE: AgroParisTech Nancy campus does NOT provide a university restaurant.

You can:

- cook and eat in the kitchen at your disposal in the St Georges residence (Only if you are staying at the residence)
- reheat a dish and eat at the St Georges foyer
- eat in town
- go to one of the university restaurants of the University of Lorraine

- **University restaurants (called RESTO U):**

Indicative 2021/22 cost= €3,30 per meal

Adresses:

- CROUS RESTO U'VELODROME (near Faculty of Sciences):
1 Boulevard des Aiguillettes, 54500 Vandœuvre-lès-Nancy
Phone: 03 83 53 33 50
- CROUS RESTO U'STANISLAS MEURTHE (near AgroParisTech):
17 Boulevard d'Austrasie, 54000 Nancy - phone: 03 83 19 21 43
- CROUS RESTO U'LEOPOLD (open 7/7) (downtown)
16 cours Léopold, 54000 Nancy - phone: 03 83 32 70 60

- **How to pay :**

You can pay by card or through your IZLY account

Beware, most university restaurants do not accept cash payments.

- **IZLY account:**

Once your registration has been validated by the University of Lorraine, you will receive an email indicating a temporary password and the procedure to follow to create your IZLY account

To pay with your account: use the application, select "pay", create a QR code and pass it on the QR code reader of the university restaurant.

To recharge your account: on the application go to "recharge".

IZLY payment is made exclusively via the application for AgroParisTech students.

The IZLY app is available on the Appstore, Google Play, and Windows Phone Store.

How to travel:



- **In Nancy and close suburbia** by **TRAMWAY** or by **BUS** via le « **réseau Stan** »:

The « Réseau Stan » is the Nancy transport network. It includes a tram line and several bus lines.

On the website, you will have access to prices, routes, timetables, and more: <http://www.reseau-stan.com>

- **Points of sale:**

- Vending machines at stops
- At the train station -Espace Transport
Place de la République - 54000 Nancy
Open from Monday to Friday :7:00 -19:00

- **Outside Nancy, by bus via le Réseau “FLUO Grand Est”:**

“FLUO Grand Est” Network allows you to go beyond the nearby suburbs of Nancy.

You can use this means of transport in particular to go to INRAE Champenoux or to the EuroAirport Basel-Mulhouse-Freiburg

You will find all the useful information on the site: <https://www.fluo.eu/>



- **By bike**

There is a bicycle rental system in the heart of Nancy: Velostan.

There are 29 stations throughout the city and two types of station: stations where you can collect or drop off a bicycle and get information, and stations where it is also possible to take a 1 day or 7 day ticket with a bank card.

(Possibility to also take a subscription):

<http://www.velostanlib.fr/Comment-ca-marche>

If you want your own bike:

Each year in September, the CROUS of Lorraine and the DYNAMO association offer sales of used bikes at low prices (€20 to €30).

Posters will tell you the dates and places of sale.

Apart from these actions, if you want to buy a used bike, you can contact: the Dynamo association: <https://atelierdynamo>



Teaching places:

- **AgroParisTech Nancy campus:**



2 access: 1/ Reception desk at **14 rue Girardet in Nancy**
2/ Residence: **97 rue St Georges in Nancy.**

From Train station: by tramway: Take Line 1 and leave at Cathédrale stop

- **Faculty of Sciences (University of Lorraine)**

**Address: Boulevard des aiguillettes
54500 Vandœuvre les Nancy**



From Cathédrale Stop (AgroParisTech) 30 min.journey.

Line T1 - Direction: Hôpital Brabois

Leave at Callot Stop or Le Reclus Stop.

- **ENSAIA (University of Lorraine)**

ENSAIA is the National School of Agronomy and Food Industries.

**Address: 2 avenue de la Forêt de Haye
54500 Vandœuvre-lès-Nancy**



From Cathédrale Stop (AgroParisTech)
30 min.journey.

Line T1 - Direction: Hôpital Brabois

Leave at Forêt de Haye Stop

- **INRAE de Champenoux:**

INRAE is the national research institute for agriculture, food and the environment.

Address: Route d'Amance, 54280 Champenoux



Classes can take place at INRAE or in the communal forests of Champenoux and Amance.

Please note that the site has a canteen for students.

To get to Champenoux use the bus via **Fluo Grand Est network**.

If you go there by car, be aware that it is forbidden to take the forest road "La Bouzule". Many accidents have occurred there.

Follow the INRA directions.

Student associations:



FAE: Federation of AgroParisTech student associations has the role of pooling the efforts of each of the associations of the AgroParisTech engineering course (in order to speak with one voice on behalf of all the students to the various partners - administration, companies, association alumni ...).

FAGEAE. This association, more specifically focused on the AETPF master, organizes a number of events during the year. They will certainly contact you upon your arrival.

ESN Nancy: Erasmus Student Network is the association of international students from Nancy. Its missions are the reception and integration of these students in Nancy through activities like outings, trips, parties and exchanges. They put online a [useful guide for international students](#).

IFSA: International Forestry Students' Association, which promotes cooperation between forestry students of all nationalities through meetings, internship exchanges and discussions via the internet or Ifsa News.

AIF: Association for the Interaction between Foresters aims to promote exchange between members of the forest community, which is made up of people who have followed a course and / or professional life in the fields of forestry, wood and natural environments. The association aims to perpetuate a "forest identity" in the French and international professional landscape. There are no limits on training or skills, the link between members is found in the term "forester"

ADEF = UDE: Students union (UDE), called ADEF in AgroParisTech Nancy Campus, organizes evenings, trips, cultural outings, fun activities (visits, matches, etc.). Its aim is to allow everyone to register in the community of students of the establishment by carrying out some flagship actions: environment week, taste and terroir, media and culture actions ... It also has important links with student offices (BDE) of other engineering schools in Nancy (ENSAIA and Géol for the most part). There are many clubs, and everyone can take over or create their own. When motivated students come together with a club idea, they can submit a provisional budget to the Student Office, which will then decide whether or not to validate it. To take advantage of all these events and opportunities, you will be invited to become a member of the UDE (annual subscription).

Practice a sport at University of Lorraine :



SUAPS is the university service for physical and sportive activities. You can practice one activity or more for free.

You just have to show your student card. Many places are available to train in Nancy and Vandoeuvre les Nancy (gymnasium, swimming pool).

Visit the website for more information: <https://tinyurl.com/sportsSUAPS>



Discover Nancy and have fun:

Nancy is a city offering many activities: theaters, concerts, cinemas, museum, pubs, restaurants, bowling, escape games,...

You can find some ideas on this website (in french):

nancy.curieux.net

Or visit tourist office website: <https://www.nancy-tourisme.fr/en/>

or building located place Stanislas.

The museums of Nancy are worth a visit. Especially:

- Museum of fine arts 3, place Stanislas 54000 Nancy
open 10:00-18:00
- Botanical garden 100, rue du Jardin-Botanique 54600 Villers-lès-Nancy
– open: 09:30-18:00
- Museum-Aquarium of Nancy: 34, rue Sainte-Catherine 54000 Nancy
open: 09:00-12:00, 14:00-18:00

Movie theatres in Nancy:

- [Caméo](#) 16 rue Commanderie – Nancy
- [Caméo](#) 6 Rue Léopold Lallement - Nancy
- [UGC](#) 54 rue Saint Jean - Nancy
- [Kinépolis](#) 3 Rue Victor -Nancy
- [Cinéma Royal](#) 18 rue Livier –Saint Max



GOOD TIPS:

- Movie theatres (and other activities) can be cheaper if you present your student card.
- Museums are free:
1st Sunday of each month
During 2 days called « Journées du patrimoine » around September 20
During the museum night (in May)

Healthcare





Consult and declare a general practitioner:

Due to legal instruction of the social security system, **you are required to declare an attending doctor** to ensure you maximum reimbursement.

If you see an undeclared doctor, you will not be fully reimbursed.



This attending doctor will be your referring practitioner during your entire stay in France. He must be consulted before any visit to a specialist doctor (except in case of an emergency, and for consultations in ophthalmology, gynaecology, odontology, psychiatry)

During your first consultation, if you want to make this doctor your referring practitioner, you should present [this form](#) to him (following link) or ask him to declare you online if he can:

https://www.ameli.fr/sites/default/files/formualires/132/s3704_0.pdf

The form (as well as any treatment sheets * delivered) must be returned to:

Caisse Primaire d'Assurance Maladie -CPAM
9 boulevard Joffre
54000 NANCY

***NOTE: Treatment sheets are issued for reimbursement of health costs as long as you do not own a social security card ('carte vitale').**



How to find a doctor:

We recommend this website: <https://www.doctolib.fr/>

Available on the Play Store and on the App Store.

You will be able to:

- Find a doctor according to the specialty and the location you need, (GP, dentist, psychologist, gynaecologist ...)
- Sort them by spoken language
- Make/Cancel an appointment online
- See the rates charged (note that for a better reimbursement, it's recommended to choose a professional: « conventionné secteur 1 »).

You can also turn to:

- **MGEN medical and dental center:** <https://tinyurl.com/MGENnancy>
6 Rue Désilles in Nancy- phone: 03 83 17 76 00
- **Dental practitioners** at Cabinet dentaire mutualiste : <https://www.utml.fr/>
6 boulevard 21ème Régiment d'aviation in Nancy - phone 03 83 17 77 21

If you are in a special situation (VISA regularization in progress, non-finalization of social security registration, etc.): The Permanence of Access to Health Care (PASS) Michel Maignan welcomes and supports, at the medical and social level, any person with a health problem: <https://tinyurl.com/CHUsoinspass>

PASS - Medical and social permanence:

29 av. Maréchal de Lattre de Tassigny in Nancy phone: 03 83 85 97 04

Without an appointment: Monday to Thursday morning (preferably come at 8 am: reception by order of arrival)

WITH appointment: Monday afternoon and Friday morning



Outside the hours of consultation and for any health problem that cannot wait for an appointment, you can contact:

Maison Médicale :

31 Rue Lionnois in Nancy

You'll be able to meet a general practitioner without appointment at the following times:

Monday to Friday 20:00.> Midnight

Saturday 12:00> Midnight

Sunday 8:00>Midnight

National holidays 8:00> Midnight

SOS Médecins 54:

4 avenue Jeanne d'Arc in Vandœuvre-lès-Nancy

09h00>midnight – 7/7 including national holidays

Appointments at: 0 826 46 46 24 (€0.18 / min + price of the call)

Home visit (if you cannot travel and only as an emergency): 0 826 46 54 54 (€0.18 / min + price of the call)

**For serious health issues or injuries, go to Emergency:
Hôpital Central 27-29 rue Lionnois in Nancy**



EMERGENCY NUMBERS:

Emergency numbers are free of charge.

Make sure you have them saved in your phone and keep them available if necessary.



15 = SAMU

Number to contact for any major health concern (malaise, accident, loss of consciousness, childbirth).

A doctor will advise you and send you an ambulance or the fire department, depending on the severity of the situation.



18 = FIREFIGHTERS (“POMPIERS”)

Contact number in case of fire, flood, and risk of drowning.



17= POLICE

Number to contact in case of assault, theft or dangerous situation.



112 = EUROPEAN EMERGENCY NUMBER

This number works in all countries of the European Union, call by cell phone, for all emergencies

You will be directed to the appropriate service according to your situation (firefighter, ambulance, police)



WATCH GROUP ON AGROPARISTECH NANCY CAMPUS

The well-being of students is paramount to us.

If you encounter financial, personal, academic or administrative difficulties, do not hesitate to contact this address:

celluleveille-nancy@agroparistech.fr

The following persons will receive your message and will guide you as best as possible.

Name and function	location
Bruno Ferry Teacher – manager of AETPF master (English speaker)	Rameau building 3 rd floor
Christophe Voreux Director of studies and pedagogy and teacher (English speaker)	Nanquette building 1st floor Office 117
Laetitia Thiriet AETPF master secretary (English speaker)	Nanquette building 1st floor Office 115
Anne-Sophie Nowak Residence secretary and accounting	Ask Reception desk

You can make an appointment by phone or email with a **psychopraticien**, **Isabelle Demeure**, who is working at AgroParistech – Ile de France.
Contact her at: isabelle.demeure@agroparistech.fr

You can also have access to medical and psychological help at the medical units of the University of Lorraine:

SUMPPS-Nancy / Vélodrome (near faculty of sciences)

Rond-Point du Vélodrome

6, Rue Jacques Callot in Vandoeuvre les Nancy

03 72 74 05 51 (medical issue) or 03 72 74 05 65 (social issue)

SUMPPS-Nancy / Faculty of letters and human sciences

Maison de l'étudiant - Pôle Santé

23, boulevard Albert 1^{er} in Nancy

03 72 74 05 71 (medical issue) or 03 72 74 05 75 (social issue)

GLOSSARY

To help you out with acronyms you will encounter during your student life

- AETPF : Agrosiences, Environment, Territory, Landscape and Forest
- APT : AgroParisTech
- BFD : Wood, Forest, Sustainable Development (master's track)
- CPAM : Caisse Primaire d'Assurance Maladie (official administration for health insurance)
- CVEC : Contribution to student life and campus
- DEP : Department of Studies and Pedagogy
- DEVE : Department of Studies and Student Life
- ECOSAFE : Agricultural and Forest Ecosystems (master's track)
- ENSAIA : National School of Agronomy and Food Industries
- ENT : Digital Work Environment of the University of Lorraine
- FST : Faculty of Science and Technology
- GCRE : Conservation management and ecosystem restoration
- INRAE : National Research Institute for Agriculture, Food and the Environment
- IPE : Plant environment interactions
- ONF : National Forestry Office
- SIUAPS : Interuniversity service for physical and sports activities.
- SUMPPS : University Service of Preventive Medicine and Health Promotion
- Synapses : management software where registration takes place as well as your internship agreement
- UL : University of Lorraine
- UE : Teaching unit
- UC : Capitalizable unit



AgroParisTech- Centre de Nancy
Direction des études et de la pédagogie
14 rue Girardet
CS14216
F-54042 Nancy cedex



depnancy@agroparistech.fr



<http://www2.agroparistech.fr/Mention-AETPF-Nancy-.html>



@APT_Nancy